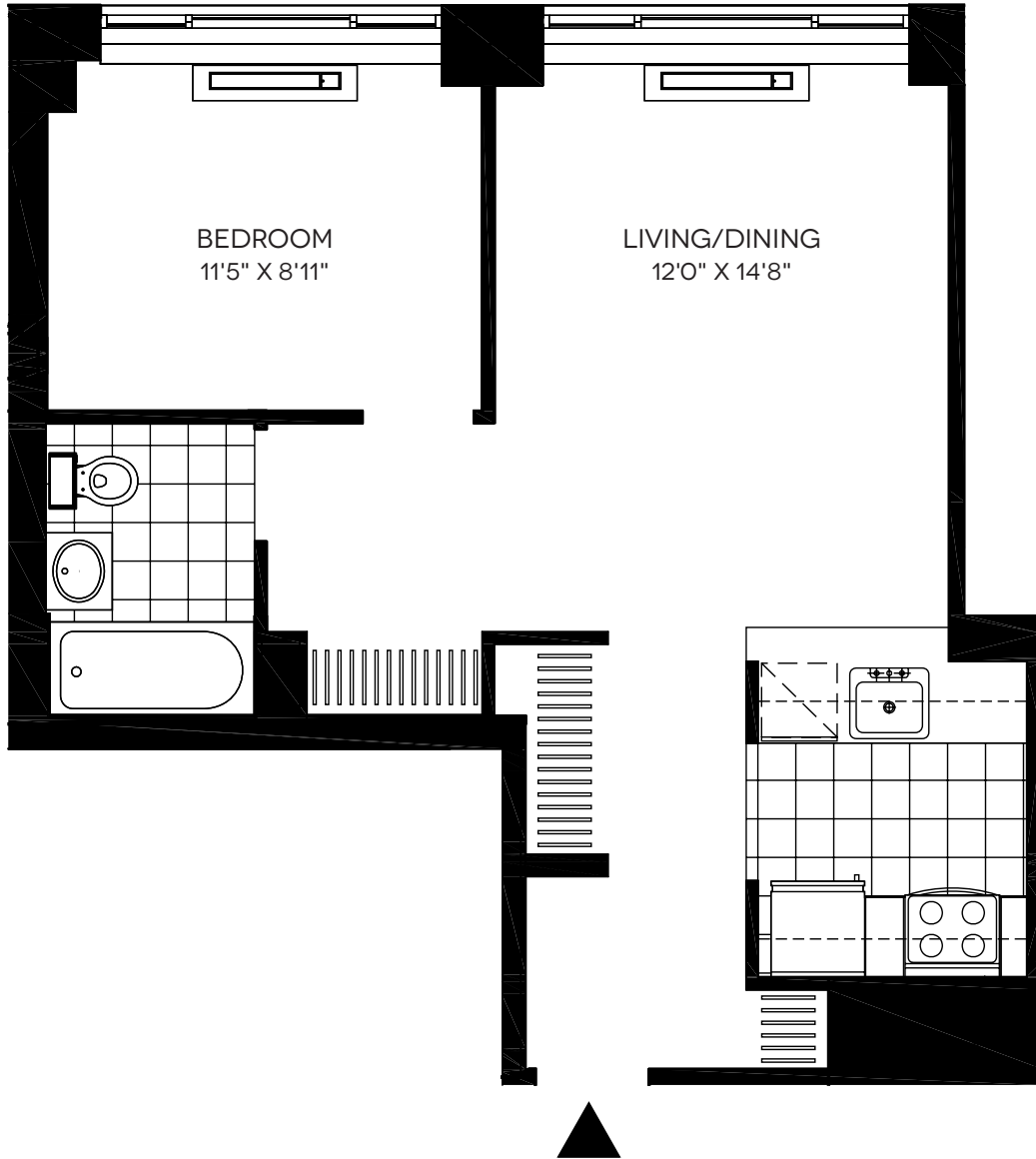
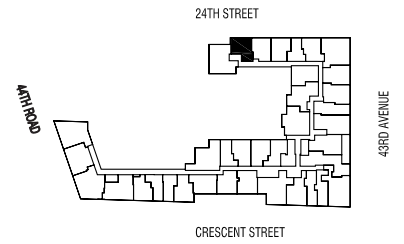


# RESIDENCE 5 / FLOORS 3-6

1 BEDROOM, 1 BATH / 588 SQ. FT



NOTES \_\_\_\_\_

\_\_\_\_\_  
\_\_\_\_\_  
\_\_\_\_\_  
\_\_\_\_\_



43-10 Crescent Street  
Long Island City, NY 11101

All layouts and details shown are approximate.

